

MR-6000

Multifunction Unit



Specifications



REFRACTIVE POWER MEASUREMENT

Spherical power	-30.00 D to +25.00 D (at VD = 12.00 mm)
Cylindrical power	0.00 D to ± 12.50 D (at VD = 12.00 mm)
Astigmatic axis	0° to 180°

KERATOMETRY MEASUREMENT

Corneal curvature radius	5.00 mm to 13.00 mm
Corneal astigmatic axis	0° to 180°

INTRAOCULAR PRESSURE MEASUREMENT

Measurement range	1 mm Hg to 60 mm Hg (1 hPa to 80 hPa)
-------------------	---------------------------------------

PACHYMETRY MEASUREMENT

Measurement range	300 µm to 800 µm
-------------------	------------------

TOPOGRAPHY MEASUREMENT

Corneal curvature radius	5.50 mm to 10.00 mm
Corneal astigmatic axis	0° to 180°

AUXILIARY FUNCTION

Interpupillary distance	20 mm to 85 mm
Corneal diameter and pupil diameter	1.00 mm to 14.00 mm
Dry-eye application	Blinking frequency, tear meniscus height, hyperemia, Meibomian glands

DATA MANAGEMENT

Internal database	Integrated SD card
Printer	Integrated thermal printer
Data output type	3x USB 2.0, 1x Ethernet, 1x SD card slot, 1x WLAN (not available in all countries)
Export format	DCM, XML, CSV, JPG, PDF

DIMENSIONS AND ELECTRICAL REQUIREMENTS

Dimensions WDH	312 x 491 x 450 mm
Weight	approx. 23 kg
Voltage	100 VAC to 240 VAC
Frequency	50/60 Hz
Power consumption	110 VA
Laser class	Class 1

TOMEY EUROPE TOMEY GMBH

Wiesbadener Strasse 21
90427 Nuremberg | Germany
+49 911 938 546 2 - 0
+49 911 938 546 2 - 20
info@tomey.de

tomey.de

Follow TOMEY



TOMEY GmbH is the European headquarters of TOMEY Corporation, 2-11-33 Noritakeshimachi Nishi-Ku, Nagoya, 451-0051, Japan



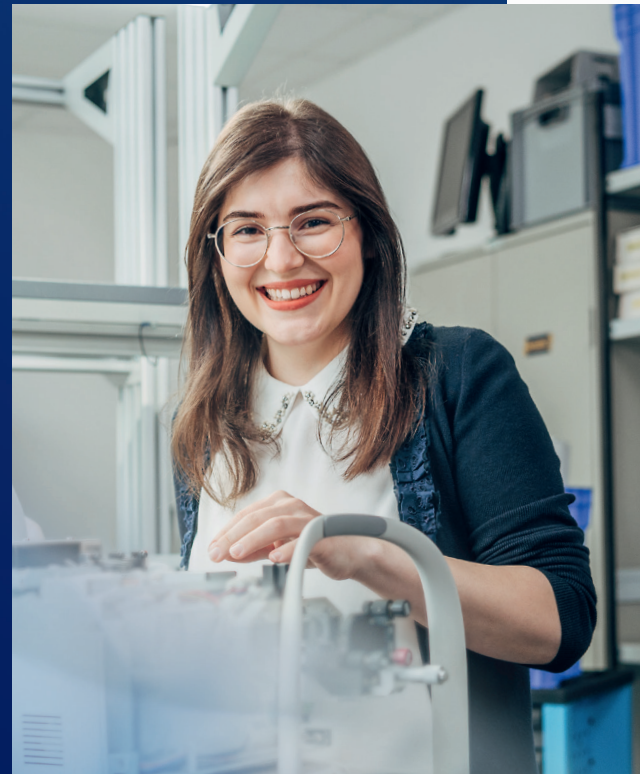
2021/10 - subject to change without notice

Simplicity meets variety

The versatile multifunction unit for eye examinations can:

- + Determine the objective refraction
- + Visualise the corneal shape and detect anomalies
- + Assess the IOP and C.IOP as part of glaucoma screening
- + Measure the central corneal thickness
- + Observe dry-eye

You + eye.
We care.



"IT'S APPEALING TO WORK WITH HIGH-END TECHNOLOGY DEVICES AND LEARN ABOUT THEIR BENEFITS FOR MEDICAL TREATMENT."

Katharina Koristi

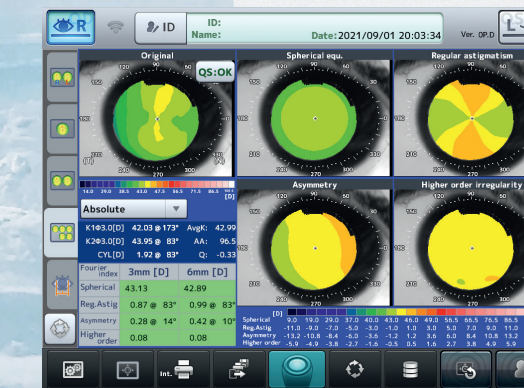
TECHNICAL DEPARTMENT
ENGINEER

MR-6000 Multifunction Unit

The MR-6000 delivers a smart combination of six different eye examinations. Along with the advantage of automatic alignment, this means that the MR-6000 speeds up your workflow and makes it more efficient.



Dry-eye application
Blinking frequency, tear meniscus height, hyperemia, and Meibomian gland observation all help assess dry eye.



Topography
16 Mire rings examine an area 8 mm in diameter. A number of topography maps, including Fourier analysis, provide a wide range of options for visualising corneal shape.

Wide range alignment by image recognition
Refined auto alignment and auto shot support the operator during the examination.

Measurement cone interchange in just 4 sec
Electrical cone interchange enables rapid switching between the measurement modes.

Pupil and corneal diameter
The diameters of pupil and cornea (WTW) are measured with each topography. Manual postprocessing provides the accurate value.

Six functions in one system
The multifunction unit includes objective refraction, keratometry, and topography. The combination of tonometry and pachymetry and finally the dry-eye application complete the six-in-one system.

Quick refraction mode
The quick refraction mode supports refraction values to be obtained within seconds despite fixation loss: for example, for patients with nystagmus, children, or uncooperative patients.

Corrected IOP
A new generation of air-flow technology delivers a friendly and gentle air puff. The automated IOP correction factors in pachymetry values to obtain reliable IOP values.

