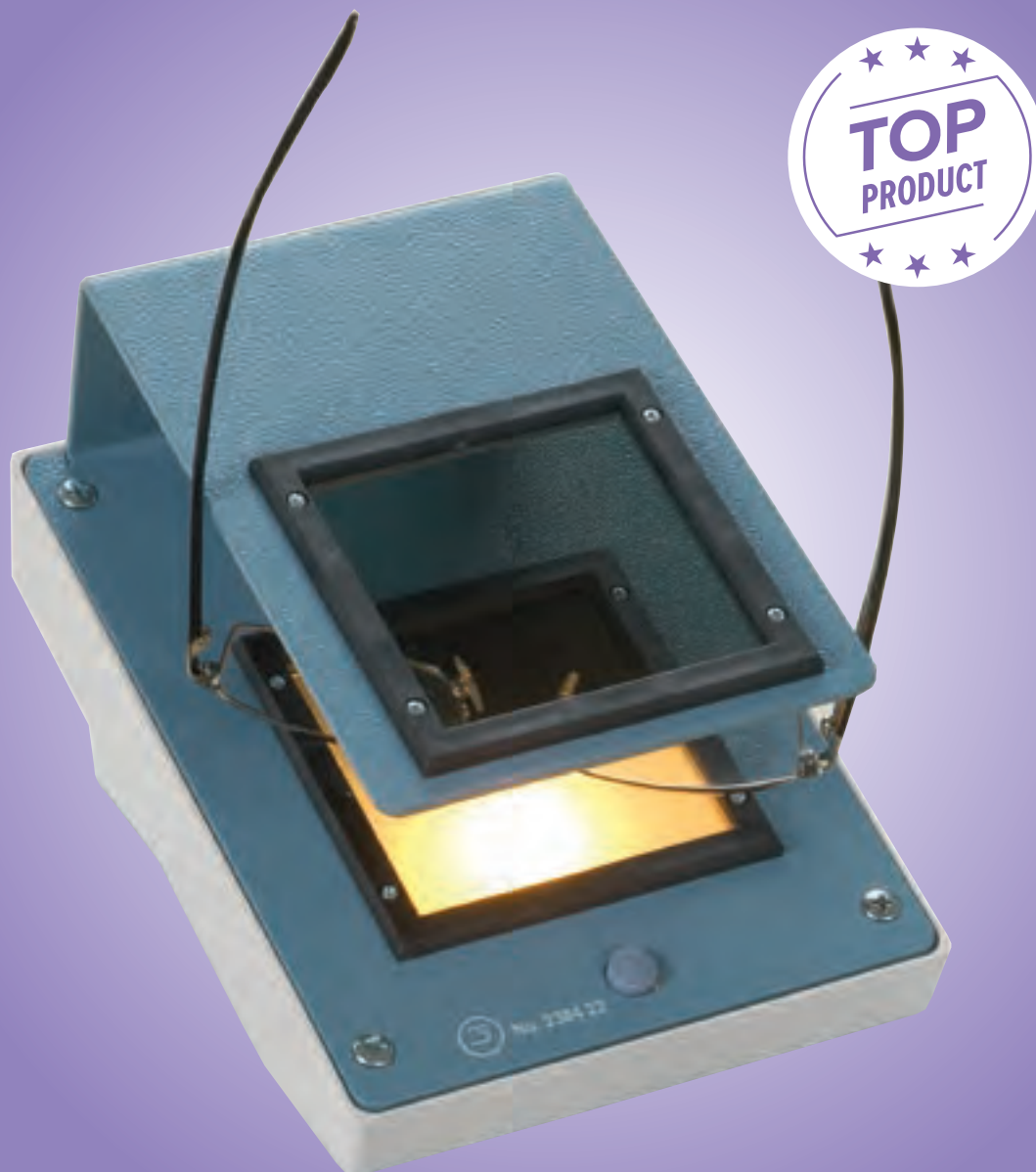


The B & S polariscope

"Made in Germany" quality. Its outstanding characteristics are ease of use and functional reliability. The tilted alignment of the polarisation filter makes identifying the stress fields in the lens area both simple and easy. A large test area and good ergonomic qualities make it an optimum aid in the workshop and in the sales area.



Polariscope

- Now with LED light source
- With illumination via push-button
- Automatic shut-off after approx. 15 sec

120 2862
2384 22

LED Light Source

For No. 120 2862.

120 2865
2384 56

Technical data

Size of test area:	68 x 68 mm
Distance between polarised fields:	50 mm
Timer:	approx. 15 sec illumination
Power:	1.3 W
Power usage per 10 min:	0.0002 kWh
Voltage:	230 V
Size (w x h x d):	130 x 130 x 175 mm
Weight:	700 g

36 month warranty!

 For **spare parts** contact your local distributor.