



OPTOMETRY

Tools for the right diagnosis



- D 2 Trial Frames
- D 5 Trial Lens Sets
- D 8 Cross Cylinders and Test Strips
- D 10 Occluder & Colour Charts
- D 11 Tips & Tricks: Prism Foils
- D 12 Ophthalmic Lenses
- D 13 Stick-on Reading Segment
- D 14 Occluders
- D 15 Occlusion Foils
- D 16 Eye Patches Picolo
- D 18 Contact Lens Equipment
- D 22 Lens Clock and Thickness Gauge
- D 24 Caliper Gauges
- D 26 Tips & Tricks: The Cube
- D 29 Rulers

“Trial Frame Perfection” Trial Frame from Oculus; “Made in Germany” of course!



Hypo-allergenic plastic, easy to use and comfortable to wear; top workmanship gives this product its renowned quality.

Trial Frame from Oculus

- For trial lenses with diameter of 38 mm
- PD-Range 46 to 80 mm
- Adjustable bridge height and inclination
- Dermatologically safe material (**hypo-allergenic**)

UB6

- Use up to 12 trial lenses in total
- 2.5° steps for a better readability
- Flexible double temple tips for a perfect fit

120 5325
4428 00



For **spare parts** contact your local distributor.



Polarised Clip-on

For lateral mounting on the trial frame No. 120 5325.

120 5333 4428 50 Polarisation = Circular

120 5334 4428 51 Polarisation = V-position (45°/135°)

120 5333-34

1 pair (left and right)



Polarised Clip-on for Testing

Polarisation = V-position (45°/135°)

120 5470
4458 30




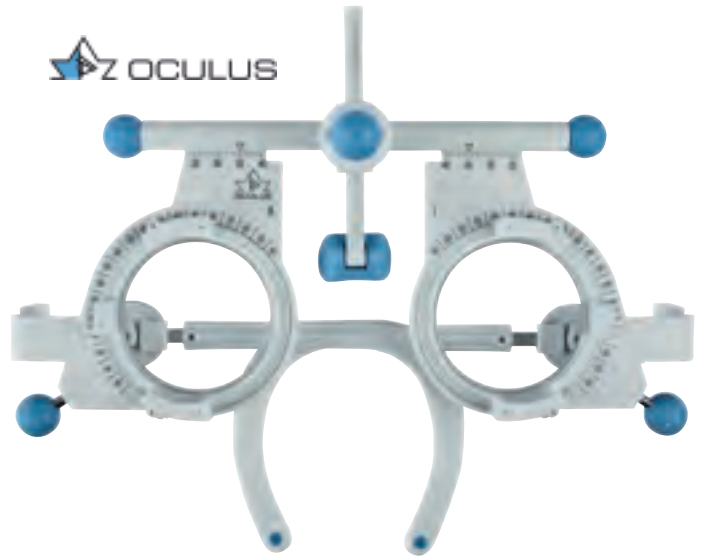
UB4

- Use up to 10 trial lenses in total
- Flexible and anatomic adjustable temple ends
- Trendy up to date design

120 5273
4423 00

 70 g

 For **spare parts** contact your local distributor.



Polarised Clip-on

For lateral mounting on the trial frame No. 120 5273.
Polarisation = V-position (45°/135°)

120 5296
4423 51

 1 pair (left and right)

 Z OCULUS



Polarised Clip-on

For lateral mounting on the trial frame No. 120 5273.
Polarisation = Circular

120 5295
4423 50

 1 pair (left and right)

 Z OCULUS



Polarised Clip-on

- With plastic rims
- Diameter rim: 38 mm
- Diameter lens: 21 mm
- Polarisation: Circular
- Suitable for 3D sight testing

120 5469
4458 20

 1 pair (left and right)

 Z OCULUS



Universal Trial Frame

- Use up to 10 trial lenses (Ø 38 mm)
- PD-range 50 to 80 mm
- Measuring device for vertex distance
- Temple inclination and length adjustable
- Bridge height and inclination adjustable at the same time
- Nose pads and temple ends have extra soft quality
- Incl. 2 nose pads, size S and M
- Colour: Black
- Delivered in B & S design box

120 5316  61 g
4427 00

 For **spare parts** contact your local distributor.



Universal Trial Frame

- With improved nose bridge
- Use up to 8 trial lenses (Ø 38 mm)
- PD-range 48 to 80 mm
- Measuring device for vertex distance
- Temple inclination and length adjustable
- Adjustable bridge height and inclination
- Nose pads and temple ends have extra soft quality
- Incl. 2 extra nose pads
- Colour: Black
- Delivered in B & S design box

120 5306  80 g
4426 00

 For **spare parts** contact your local distributor.



Universal Trial Frame

- Lightweight
- Holds 8 trial lenses (Ø 38 mm)
- PD-range 50 to 80 mm
- Temple inclination, length and bridge height are individually adjustable
- Colour: Charcoal grey
- Plastic storage box

120 5335  52 g
4429 00

 For **spare parts** contact your local distributor.



Trial Lens Set with 268 Trial Lenses with Metal Rims

- In high quality metal case
- Suitable for standard trial frames with 38 mm lenses
- All lenses are individually available

120 4913  54 x 10 x 35 cm  6.6 kg
4369 05

 For **spare parts** contact your local distributor.



Content of the Trial Lens Set

40 pairs each of plus and minus lenses:

- ± 0.12 dpt.
- ± 0.25 dpt. up to ± 6.00 dpt. in 0.25 increments
- ± 6.50 dpt. up to ± 10.00 dpt. in 0.50 increments
- ± 11.00 dpt. up to ± 14.00 dpt. in 1.00 increments
- ± 16.00 dpt. up to ± 20.00 dpt. in 2.00 increments

21 pairs each of plus and minus cylinders:

- ± 0.12 dpt.
- ± 0.25 dpt. up to ± 4.00 dpt. in 0.25 increments
- ± 4.50 dpt. up to ± 6.00 dpt. in 0.50 increments

14 prism lenses:

- 0.50 pdpt. (2 pcs) in 0.50 increments
- 1.00 pdpt. up to 4.00 pdpt. (2 pcs) in 1.00 increments
- 5.00 pdpt. up to 6.00 pdpt. (1 pc) in 1.00 increments
- 8.00 pdpt. up to 10.00 pdpt. (1 pc) in 2.00 increments

10 accessory lenses:

- 1x occluder/black
- 1x pinhole small
- 1x pinhole large
- 1x aperture slot
- 1x ribbed lens
- 1x crossline
- 1x plano lens
- 1x red
- 1x green
- 1x cross cylinder 0.25 dpt.

Trial Lens Set with 260 Trial Lenses with Metal Rims and AR-Coating

- In high quality metal case
- Suitable for standard trial frames with 38 mm lenses
- All lenses are individually available

120 4934  54 x 10 x 35 cm  6.6 kg
4369 10

 For **spare parts** contact your local distributor.



Content of the Trial Lens Set

39 pairs each of plus and minus lenses:

- ± 0.25 dpt. up to ± 6.00 dpt. in 0.25 increments
- ± 6.50 dpt. up to ± 10.00 dpt. in 0.50 increments
- ± 11.00 dpt. up to ± 14.00 dpt. in 1.00 increments
- ± 16.00 dpt. up to ± 20.00 dpt. in 2.00 increments

20 pairs each of plus and minus cylinders:

- ± 0.25 dpt. up to ± 4.00 dpt. in 0.25 increments
- ± 4.50 dpt. up to ± 6.00 dpt. in 0.50 increments

14 prism lenses:

- 0.50 pdpt. (2 pcs) in 0.50 increments
- 1.00 pdpt. up to 4.00 pdpt. (2 pcs) in 1.00 increments
- 5.00 pdpt. up to 6.00 pdpt. (1 pc) in 1.00 increments
- 8.00 pdpt. up to 10.00 pdpt. (1 pc) in 2.00 increments

10 accessory lenses:

- 1x occluder/black
- 1x pinhole small
- 1x pinhole large
- 1x aperture slot
- 1x ribbed lens
- 1x crossline
- 1x plano lens
- 1x red
- 1x green
- 1x cross cylinder 0.25 dpt.


Trial Lens Set with 260 Trial Lenses with Plastic Rims

- In high quality metal case
- Suitable for standard trial frames with 38 mm lenses
- All lenses are individually available

120 4936
4369 20

 54 x 10 x 35 cm

 5.5 kg

 For **spare parts** contact your local distributor.



Content of the Trial Lens Set

39 pairs each of plus and minus lenses:

- ± 0.25 dpt. up to ± 6.00 dpt. in 0.25 increments
- ± 6.50 dpt. up to ± 10.00 dpt. in 0.50 increments
- ± 11.00 dpt. up to ± 14.00 dpt. in 1.00 increments
- ± 16.00 dpt. up to ± 20.00 dpt. in 2.00 increments

20 pairs each of plus and minus cylinders:

- ± 0.25 dpt. up to ± 4.00 dpt. in 0.25 increments
- ± 4.50 dpt. up to ± 6.00 dpt. in 0.50 increments

14 prism lenses:

- 0.50 pdpt. (2 pcs)
- 1.00 pdpt. up to 4.00 pdpt. (2 pcs) in 1.00 increments
- 5.00 pdpt. up to 6.00 pdpt. (1 pc) in 1.00 increments
- 8.00 pdpt. up to 10.00 pdpt. (1 pc) in 2.00 increments

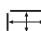
10 accessory lenses:

- 1x occluder/black
- 1x pinhole small
- 1x pinhole large
- 1x aperture slot
- 1x ribbed lens
- 1x crossline
- 1x plano lens
- 1x red
- 1x green
- 1x cross cylinder 0.25 dpt.


Trial Lens Set with 159 Trial Lenses with Metal Rims

- In high quality metal case
- Suitable for standard trial frames with 38 mm lenses
- All lenses are individually available

120 5082
4369 40

 52.5 x 6.8 x 30 cm

 5 kg

 For **spare parts** contact your local distributor.



Content of the Trial Lens Set

25 pairs each of plus and minus lenses:

- ± 0.25 dpt. up to ± 4.00 dpt. in 0.25 increments
- ± 4.50 dpt. up to ± 6.00 dpt. in 0.50 increments
- ± 7.00 dpt. up to ± 10.00 dpt. in 1.00 increments
- ± 12.00 dpt.

11 pairs each of plus and minus cylinders:

- ± 0.25 dpt. up to ± 2.00 dpt. in 0.25 increments
- ± 2.50 dpt. up to ± 3.00 dpt. in 0.50 increments
- ± 4.00 dpt.

8 prism lenses:

- 0.50 pdpt. up to 1.00 pdpt. (2 pcs) in 0.50 increments
- 2.00 pdpt. up to 5.00 pdpt. (1 pc) in 1.00 increments

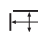
7 accessory lenses:

- 1x occluder/black
- 1x pinhole
- 1x aperture slot
- 1x crossline
- 1x red
- 1x green
- 1x cross cylinder 0.25 dpt.

Upgrade Trial Lens Set, with 8 pcs of 0.12 dpt. Trial Lenses with Plastic Rims

- 1 pair of plus and minus lenses
- 1 pair of plus and minus cylinder
- Suitable for standard trial frames with 38 mm lenses
- All lenses are individually available

120 4977
4369 22

 22 x 2.5 x 12.5 cm

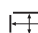
 114 g



Prism Trial Lens Set with Metal Rims

- Trial lens set upgrade, with 36 pcs prism lenses with power from 0.50 pdpt. up to 10.00 prism pdpt.
0.50 pdpt. (4 pcs)
1.00 pdpt. up to 6.00 pdpt. (4 pcs) in 1.00 increments
8.00 pdpt. up to 10.00 pdpt. (4 pcs) in 2.00 increments
- With 4 different base directions (45°/135°/225°/315°)
- Suitable for standard trial frames with 38 mm lenses

120 4935
4369 13

 24.5 x 9.5 x 17.5 cm


 1.4 kg



Prism Trial Lens Set with Plastic Rims

- Trial lens set upgrade, with 36 pcs prism lenses with power from 0.50 pdpt. up to 10.00 prism pdpt.
0.50 pdpt. (4 pcs)
1.00 pdpt. up to 6.00 pdpt. (4 pcs) in 1.00 increments
8.00 pdpt. up to 10.00 pdpt. (4 pcs) in 2.00 increments
- With 4 different base directions (45°/135°/225°/315°)
- Suitable for standard trial frames with 38 mm lenses

120 5019
4369 23

 24.5 x 9.5 x 17.5 cm

 1.2 kg



Everything at a glance.

Proven quality from Germany, very handy and light.



Cross Cylinder

With AR coating

∅ 25 mm 12 g

120 4784-85

120 4784 ± 0.25 dpt.
4367 20

120 4785 ± 0.50 dpt.
4367 40



Cross Cylinder

∅ 35 mm 25 g

120 5083-84

120 5083 ± 0.25 dpt.
4370 25

120 5084 ± 0.50 dpt.
4370 50



Power Testing Bar

With AR coating

Effect in diopters: Sph. ± 0.25 up to ± 0.50 dpt.

120 4783 ∅ 19 mm each 40 g
4366 05



Power Testing Bar

Effect in diopters: Sph. ± 0.25 up to ± 0.50 dpt.
Delivered in B&S Design Box

120 5088 ∅ 21 mm each 40 g
4373 00



Power Testing Bar Assortment

4 wooden bars in a matching wooden case.
Effect in diopters: Sph. ± 0.5 up to ± 3.5 dpt. and ± 4.0 up to ± 12.0 dpt.

120 5089 ∅ 21 mm each 50 g/bar
4373 50



Confirmation Test

Effect in diopters: Sph. \pm 0.25 dpt.

120 5087 \varnothing 35 mm each \blacktriangle 25 g
4372 00



Binocular Confirmation Test Metal

Effect in diopters: Sph. \pm 0.25 dpt.
Adjustment of PD: 46 to 82 mm

120 5090 \varnothing 35 mm each \blacktriangle 72 g
4374 00



Binocular Confirmation Test Plastic

Adjustment of PD: 44 to 81 mm

120 5094-95 \varnothing 35 mm each \blacktriangle 37 g



120 5094 Effect in diopters: Sph. \pm 0.25 dpt.
4377 25

120 5095 Effect in diopters: Sph. \pm 0.50 dpt.
4377 50



Occluder

For cover test.
Total length: 24.5 cm

120 5091  6 cm  21 g
4375 00



LANG Fixation Cube

To be used for the cover test and motility test.

120 5096
4378 00

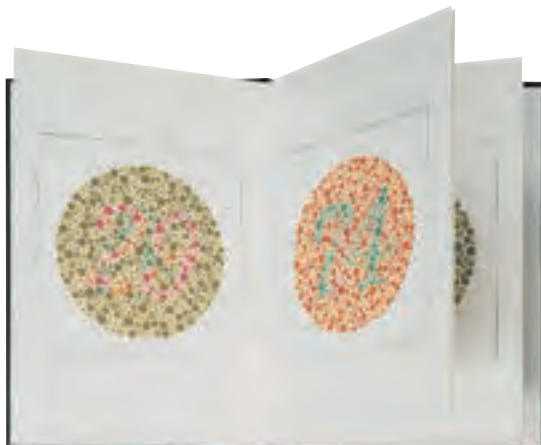


Ishihara Colour Chart

Book type, 14 charts.
Size: DIN A5



120 5536  250 g
4476 10



Matsubara Colour Chart for Children

Book type, 10 charts, incl. 6 matching plates.
Size: DIN A5



120 5537  275 g
4476 20



TIPS & TRICKS

ATTACH PRISM FOILS PROPERLY

Get the Right Base Position!

Prism Foils

No. 120 0806-120 0822

Scissors for Plastic

No. 121 0105

Foil Pen

No. 120 3049



approx. 2-3 minutes

This is how it works



1 UNPACKING



2 RECOGNIZING THE BASE



3 ATTACHING



4 MARKING



5 CUT OUT



6 MOISTEN



7 ATTACHING



8 SMOOTHING



TIP: Clean the foil only with water. Don't use any aggressive cleaning agents as the foil would lose its clearness!

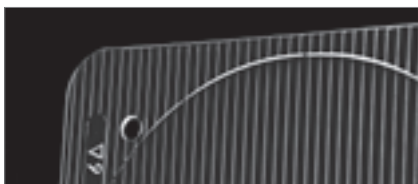


ATTENTION: Storing period for lens foils max. 1 year. Please mark foils only with tallow or wax pencils!

3M Ophthalmic Lenses

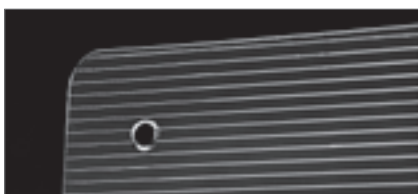
- Prismatic additions for squint treatment
- Highly transparent material with perfect optical quality
- High flexibility, good adhesion and image quality
- Useful diameter: 66 mm

120 0806–22



Ophthalmic Lenses

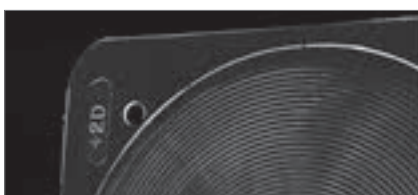
- Prismatic additions for squint treatment
- Useful diameter: 58 mm



3M Lens Foils

- Spherical additions
- Highly transparent material with perfect optical quality
- Useful diameter: 66 mm
- Center thickness: 0.8 mm

120 0841–45



Order No.	cm/m	Order No.	cm/m	Order No.	cm/m
120 0806	1	120 0812	7	120 0818	20
0639 01		0639 07		0639 20	
120 0807	2	120 0813	8	120 0819	25
0639 02		0639 08		0639 25	
120 0808	3	120 0814	9	120 0820	30
0639 03		0639 09		0639 30	
120 0809	4	120 0815	10	120 0821	35
0639 04		0639 10		0639 35	
120 0810	5	120 0816	12	120 0822	40
0639 05		0639 12		0639 40	
120 0811	6	120 0817	15		
0639 06		0639 15			

Order No.	cm/m	Order No.	cm/m	Order No.	cm/m
120 0823	1	120 0830	7	120 0836	17.5
0640 01		0640 07		0640 17	
120 0825	2	120 0831	8	120 0837	20
0640 02		0640 08		0640 20	
120 0826	3	120 0832	9	120 0838	25
0640 03		0640 09		0640 25	
120 0827	4	120 0833	10	120 0839	30
0640 04		0640 10		0640 30	
120 0828	5	120 0834	12	120 0840	35
0640 05		0640 12		0640 35	
120 0829	6	120 0835	15		
0640 06		0640 15			

Order No.	Effect dpt.	Order No.	Effect dpt.
120 0841	+ 1.0	120 0844	+ 2.5
0646 10		0646 25	
120 0842	+ 1.5	120 0845	+ 3.0
0646 15		0646 30	
120 0843	+ 2.0		
0646 20			



Stick-on Reading Segment



Multiple application ...



... in protective goggles



... in sunglasses

Hydrotac

- Flexible plastic
- Reusable self adhesive
- Easy to handle

31 x 17 mm 1 pair

120 0796-801

120 0796	+ 1.25
0638 12	
120 0797	+ 1.50
0638 15	
120 0798	+ 1.75
0638 17	
120 0799	+ 2.00
0638 20	
120 0800	+ 2.50
0638 25	
120 0801	+ 3.00
0638 30	



Hydrotac Assortment

- 12 packets of reading segments
- 2 packets per diopter

12 pairs

120 0804
0638 99



3M

- Flexible plastic
- Reusable self adhesive
- Easy to handle

28 x 16 mm 1 pair

120 0790-94

120 0790	+ 1.00
0637 10	
120 0791	+ 1.50
0637 15	
120 0792	+ 2.00
0637 20	
120 0793	+ 2.50
0637 25	
120 0794	+ 3.00
0637 30	



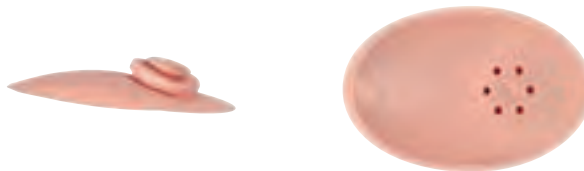
Occluder

- Skin friendly, very elastic plastic
- Easy to adjust, with effective ventilation
- Strong small sucker

120 5341

4439 80

 75 x 50 mm  of the sucker 15 mm






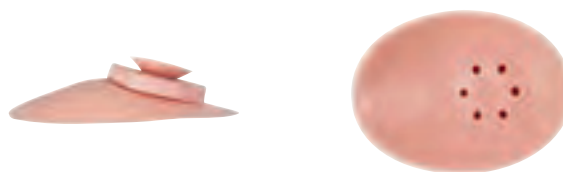
Occluder

- As No. 120 5341, but small and flat type

120 5343

4439 95

 55 x 45 mm  of the sucker 15 mm  3 pieces



Eye Patches

Each eye patch comes with elastic strap.

100 7056

2055 01000

large, concave

 89 x 44 mm

100 7058

2055 11000

large, flat

 89 x 89 mm

100 7062

2055 31000

regular, flat

 76 x 44 mm



Side Protection Universal

- Silicone, to be cut to fit metal and plastic frames
- Mounted into the groove of the frame

 1 pair

120 1679

1316 00

Black

120 1680

1316 10

Semi-Transparent



Occlusion Foils in Different Types

Based on Prof. Bangerter and Prof. Lang, in graded transparency for reducing the vision.
For full, alternating or gradual occlusion note the instructions from the doctor.

Foils in Sheet Form

10 individual foils can be cut from one foil in order to equip 10 children's spectacles. The foils can be cut using scissors. A larger surface can be covered for special applications.

120 0851-62  215 x 105 mm

Order No.	Foil	Visus reduction	Order No.	Foil	Visus reduction
120 0861 0658 20	With motifs	Full	120 0852 0658 01	Colourless	0.1
120 0851 0658 00	Beige	Full	120 0853 0658 02	Colourless	0.2
120 0860 0658 10	Grey	Full	120 0854 0658 03	Colourless	0.3
120 0862 0658 30	Matt Black	Full	120 0855 0658 04	Colourless	0.4
120 0859 0658 09	Translucent	Light perception	120 0856 0658 06	Colourless	0.6
120 0857 0658 07	Colourless	< 0.1	120 0858 0658 08	Colourless	0.8



Single Foils

120 0863-72  60 x 60 mm

Order No.	Visus reduction	Order No.	Visus reduction
120 0863 0659 00	Full	120 0866 0659 03	0.3
120 0871 0659 09	Light perception	120 0867 0659 04	0.4
120 0869 0659 07	< 0.1	120 0868 0659 06	0.6
120 0864 0659 01	0.1	120 0870 0659 08	0.8
120 0865 0659 02	0.2	120 0872 0659 10	1.0



Single Foils with Funny Motives for Squint Treatment of Children

Visus reduction: Full

120 0873, -75, -76  60 x 60 mm

Order No.	Motifs	Order No.	Motifs
120 0873 0659 20	Ladybird	120 0875 0659 24	Clown
		120 0876 0659 25	Butterfly



Eye Patches Picolo 1 for Metal Frames

Soft eye patch for glasses, fits children aged 1–6 years.

- Non adhesive, no skin irritation
- 100% cotton
- Easy mounting on all metal frames
- Fits perfectly and encircles the eye softly
- Washable



 110 x 60 mm

130 0690–95

130 0690 Cars
0651 00



130 0691 Pink check
0651 01



130 0692 Blue check
0651 02



130 0693 Small hearts
0651 03



130 0694 Blue balls
0651 04



130 0695 Pink hearts
0651 05



Eye Patches Picolo 2 for Plastic Frames

Soft eye patch for glasses, fits children aged 1–6 years.

- Non adhesive, no skin irritation
- 100% cotton
- Easy mounting on all plastic frames
- Fits perfectly and encircles the eye softly
- Washable



 110 x 60 mm

130 0696-701

130 0696 Cars
0652 00



130 0697 Pink meadow
0652 01



130 0698 Green balls
0652 02



130 0699 Small hearts
0652 03



130 0700 Blue balls
0652 04




130 0701 Pink hearts
0652 05



12 Contact Lens Cases “Funny Animals”

– including presentation display

- Presentation display, dimensions (l x w x h): 211 x 147 x 30 mm

120 6164  12 contact lens cases including presentation display
7205 00

Every Funny Animal is available separately.

- 120 6165** 7205 01 Frog, Green
- 120 6166** 7205 02 Piggy, Pink
- 120 6167** 7205 03 Hippo, Grey
- 120 6168** 7205 04 Bear, Blue
- 120 6169** 7205 05 Fish, Purple
- 120 6170** 7205 06 Elephant, Yellow
- 120 6171** 7205 07 Monkey, Dark blue
- 120 6172** 7205 08 Owl, Dark purple

 8 pieces per colour



Standard Contact Lens Cases

- For soft and hard contact lenses
- Assorted colours (6x Blue white, 6x Green white)

120 6182  12 pieces
7250 00



- For hard lenses
- Assorted colours (3x Blue yellow, 3x Blue orange)

120 6184  6 pieces
7252 00



- With Microban® technology
- Continuous protection against the growth of microbes
- Assorted colours (6x Blue white, 6x Green white)
- For soft and hard contact lenses

120 6190  12 pieces
7256 00



- Hermetically sealed barrel cases with 2 baskets for soft lenses
- Assorted colours (3x Blue orange, 3x Orange blue)

120 6183  6 pieces
7251 00



Contact Lens Tweezers

- Small, handy to carry
- With silicone tips, especially gentle for soft contact lenses
- Assorted colours (4 x Green, 4 x Blue, 4 x White)

120 6185
7254 00  12 pieces



- Large type for an optimum handling
- With silicone tips, especially gentle for soft contact lenses
- Assorted colours (4 x Yellow, 4 x Dark blue, 4 x Dark green)

120 6186
7254 10  12 pieces



Contact Lens Suction Holder

- Hypoallergenic silicone, ok to combine with all standard cleaning solutions and care products
- Including hard case, easy to carry
- For hard lenses

120 6188
7255 00  12 pieces
Orange



120 6189
7255 10  12 pieces
Green



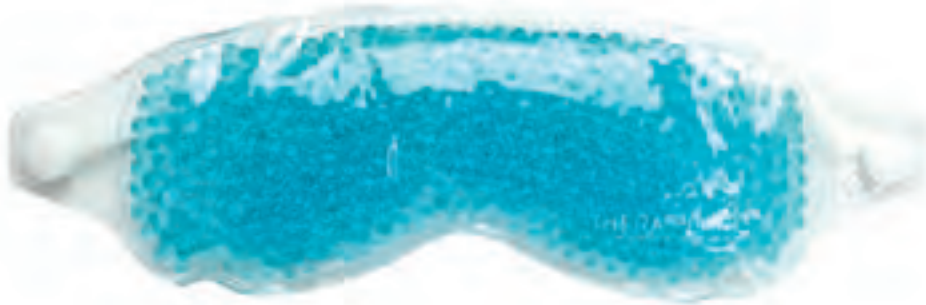
Hollow, for hard and
soft contact lenses

THERA°PEARL® Eye-ssential™ Mask

- Conforms to your face to deliver soothing relief from:
Dry Eyes,- Headaches/Sinus pain, Puffy Eyes & More!

THERA°PEARL®
A NEW DEGREE OF RELIEF™

120 6204
7293 00





Lens Clock

- For all spheric and astigmatic lenses with **refractive index n 1.53**
- Measuring range: 0 to ± 20 dpt.
- Delivered in B & S Design Box

120 2788  62 g
2315 10



Lens Clock

- For all spheric and astigmatic lenses with **refractive index n 1.49 and n 1.60**
- Measuring range: 0 to ± 18 dpt.
- Delivered in B & S Design Box

108 0776  62 g
2315 20



Thickness Gauge

- With long arms and ball pointed measuring tips
- Arm depth: 75 mm
- Lens thickness: up to 20 mm
- Reading: 0.05 mm
- Delivered in a plastic box

109 2418  390 g
2314 00



Thickness Gauge

- Arm depth: 45 mm
- Lens thickness: up to 10 mm
- Reading: 0.05 mm
- Delivered in a plastic box

120 2793  75 g
2318 00



Digital Caliper Gauge

Electronic display "mm" and "inch" readings.
 Reading: 0.1 mm = 0.004 inch
 Battery: round cell 1.5 V
 Measuring range: 150 mm
 Jaw Depth: 40 mm

120 2798  315 g
 2335 00



Universal Caliper

Stainless steel, matt chrome.
 Reading: 1/50 mm and 1/1,000 inches
 Measuring range: 150 mm
 Jaw Depth: 40 mm

120 2799  170 g
 2337 02



Pocket Caliper

Made of high quality brass, offers 6 different measuring possibilities.
 Length: 100 mm
 Length of measuring leg: 40 mm

120 2797  65 g
 2333 10







Precision work

The B & S test lens with the central overprint of the marking provides a very accurate measurement. In addition the print colour chosen to increase contrast, makes it easier to read the values. The consistent quality of the printing is guaranteed by the German manufacturer.

B & S Test Lens

With milled centre holes, reference lines to mark the centre of the pupil and segheight, easy to use.
 Compatible with Rodenstock and Essilor systems.

120 2834  68 x 0.5 x 68 mm  200 pieces
 2359 02

120 2835  68 x 0.5 x 68 mm  50 pieces
 2359 04



Segheight Gauge

Transparent, scale printed in white.

120 2851  75 x 37 mm  2 pieces
 2371 02



A very special workplace:

To simplify the assembly and adjustment of spectacles. The magnetic surface helps to prevent screws and nuts from bouncing off. The aluminum edge gives a secure grip on the workbench and prevents slipping. The printed measurement lines makes determining the frame curvature easier and helps during the adjustment of the frame.

Magnetic Mat for Rimless Work

Work base for the workshop.

Ideal for aligning all frames, in particular when assembling rimless spectacles.

- The magnetic effect retains screws and nuts (minimises bouncing of small items when dropped)
- Measuring line system for determining the **frame curvature** on sunglasses and sports frames with extremely curved lenses
- Reference lines for aligning all frames
- Centration aid for determining the frame centre
- An aluminium edge prevents slipping of the mat and serves as support when tightening screws
- Centration aid for temple inclination
- Ruler
- Sizing template to find out the rough lens diameter
- Bold lines to check the markings

109 7625
2365 21


39,4 x 28 cm

800 g




TIPS & TRICKS
THE CUBE*3 at a Stroke*

The Cube
Art. No. 109 6994

 approx. 1 minute

This is how it works**OPTION 1:****1 ATTACHING****2 MARKING****3 CHECKING****4 CORRECT****OPTION 2:****1 MEASURE****OPTION 3:****1 MEASURE**

The marking tool “The Cube”

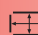
This innovative tool has been developed to combine 3 work steps in one: the simple and fast marking of spectacle lenses, the measuring of inclination and the checking of centering heights. The high-quality Staedtler pen included in the scope of delivery only has to be inserted through the tapered hole in the middle of the stylish acrylic block and off you go. Depending on which side the block is placed on, an assistant line can be drawn at four different heights in a flash and parallel. With the engraved ruler on one of the stand sides of the cube, the near part height of a bifocal lens, the progression height of a progressive lens or any other height can be measured. In addition, the Cube offers two scales for measuring inclination. It goes without saying that measurements can be taken from both the right and the left side of the temple.



The Cube

- For easy and quick marking of lenses
- For inclination measurements and inspection of the reading segment
- Including Staedtler Pen (Art. No. 120 3048)


109 6994
2372 50

 55 x 55 x 30 mm



Fine Line Ruler

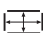
To control the axis for uncut lenses, finished lenses and varifocal lenses.

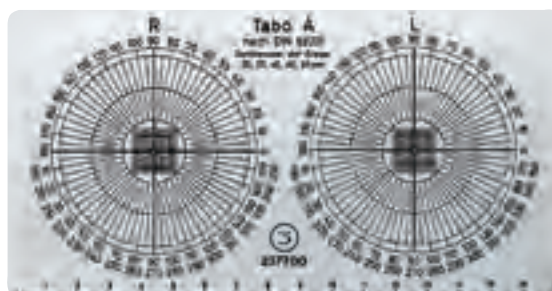
120 2850  130 x 18 x 85 mm
2367 00



Axis Layout

According to DIN 58201, Aluminium, etched scale, formulas to determine prism on decentrated lenses on rear.
Measuring range: 0–170 mm

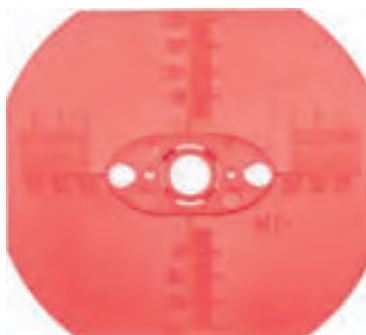
120 2860  175 x 1 x 90 mm
2377 00



Formers

Plastic with scale on one side and cross hair on the other side, can be cut with paper scissors.

109 9802  71 x 1.5 x 65 mm  100 pieces
2395 30

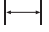



PD Ruler Transparent

Polycarbonate.

With holes to measure screw threads.

Measuring range: 0–160 mm (mm scale)

120 2855  205 mm  3 pieces
2373 00




PD Ruler

PVC.

With rear centering ring for nose bridges.

For simpler reading of markings.

Measuring range: 0–140 mm (mm scale)

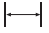
120 2796  165 mm  2 pieces
2325 00



Multipurpose PD Ruler

According to Bremer, plastic, for total PD, monocular PD, segheight, bridge size and pantoscopic angle.

Measuring range: 0–145 mm (mm scale)


120 2859  155 mm
2376 00



PD Ruler

Plastic.

Measuring range: 0–170 mm (mm scale)

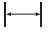
120 2858  180 mm
2374 00



Ruler Metal

Flexible, etched scale.

Measuring range: 0–150 mm (mm scale)


120 2795  165 mm
2320 01



Angle Measuring Device 180°

Metal.

Angle range: 0–180°

120 2849  45 x 174 mm
2366 00

